

# 2J7515M-915

915 MHz ISM Magnetic Mount

## Key Features

### 915 MHz ISM

- 902-928 MHz

Magnetic Mount

High Performance

Ground Plane Dependent

Customizable Cable and Connector

Dimensions  $\varnothing$  54 x 80 mm

Certificates IP67, IP69



## 1. Antenna and electrical specifications

| Parameters                  | 915 MHz ISM Antenna                            |
|-----------------------------|--|
| <b>Standards</b>            | ZigBee, ISM, SIGFOX, LoRa, RFID                |
| <b>Band (MHz)</b>           | 915 MHz  |
| <b>Frequency (MHz)</b>      | 902-928  |
| <b>Return Loss (dB)</b>     | ~-14   |
| <b>VSWR</b>                 | ~1.4:1   |
| <b>Efficiency (%)</b>       | ~66  |
| <b>Peak Gain (dBi)</b>      | ~2.3   |
| <b>Average Gain (dB)</b>    | ~-1.4  |
| <b>Impedance (Ohm)</b>      | 50   |
| <b>Polarisation</b>         | Linear   |
| <b>Radiation Pattern</b>    | Omni-Directional                               |
| <b>Max. Input Power (W)</b> | 25   |
| <b>Connector Type</b>       | SMA-Male Standard (Other Connectors Available) |
| <b>Cable Length</b>         | 300 cm Standard (Any Cable Length Available)   |
| <b>Cable Type</b>           | LL100  |

### Antenna Measurement Conditions:

Mounted on 30 x 30 cm Metal Plate

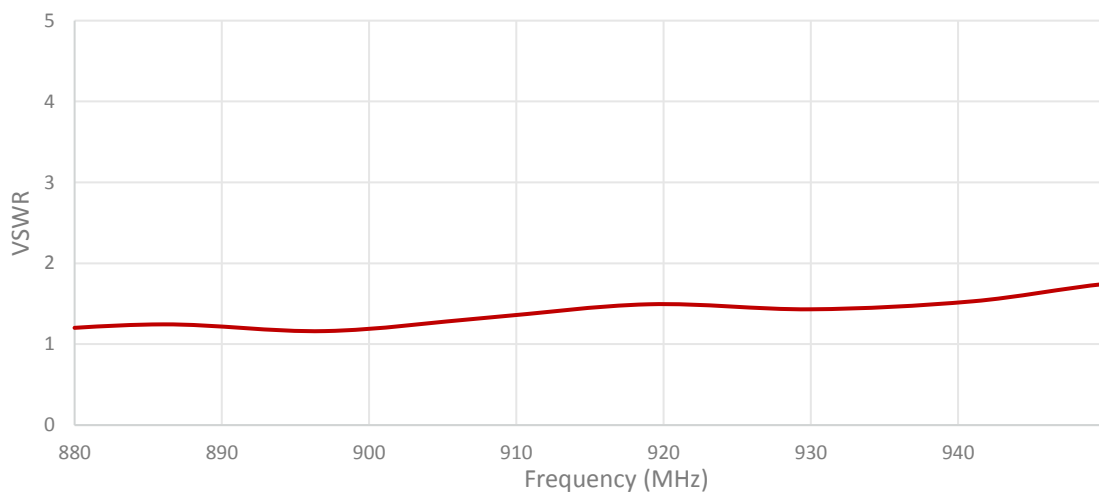
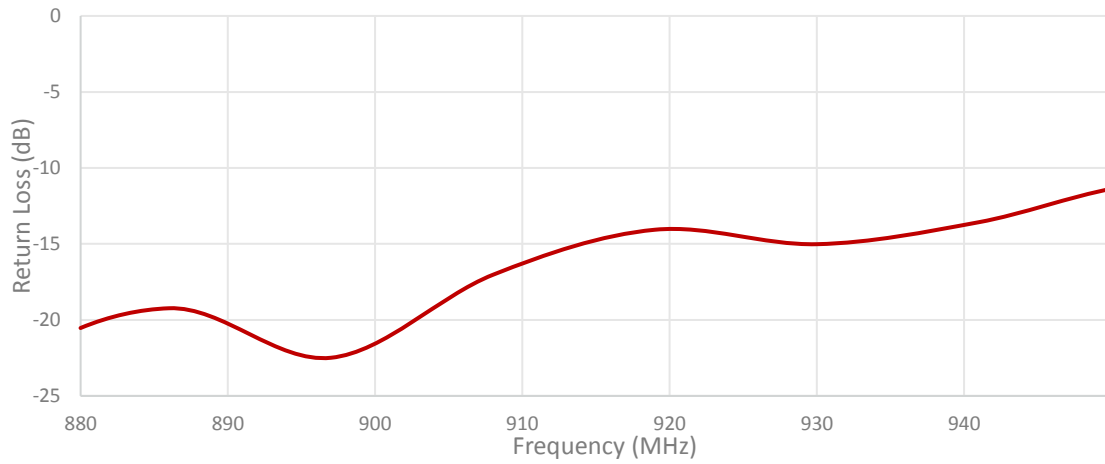
200 cm of D302

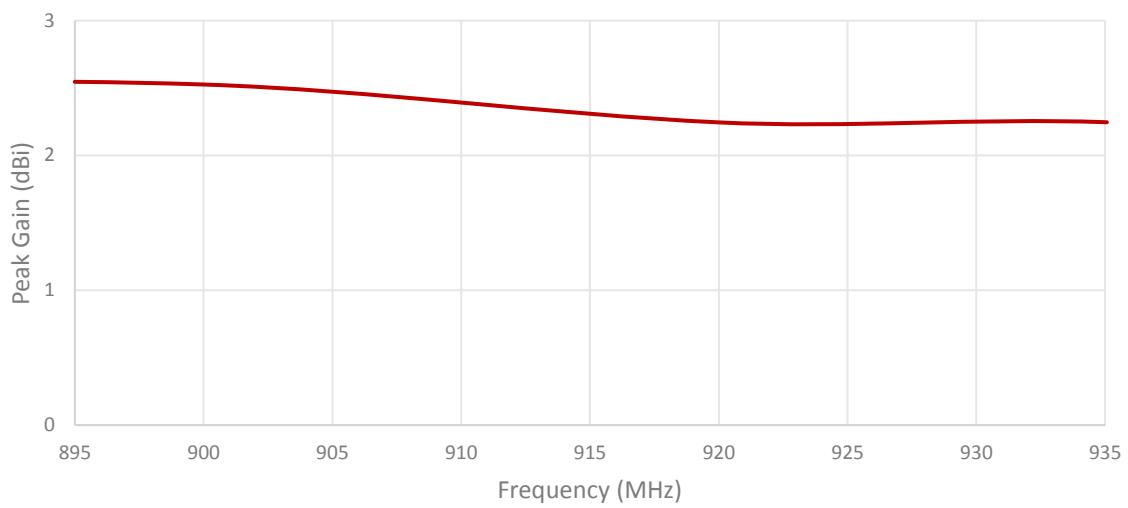
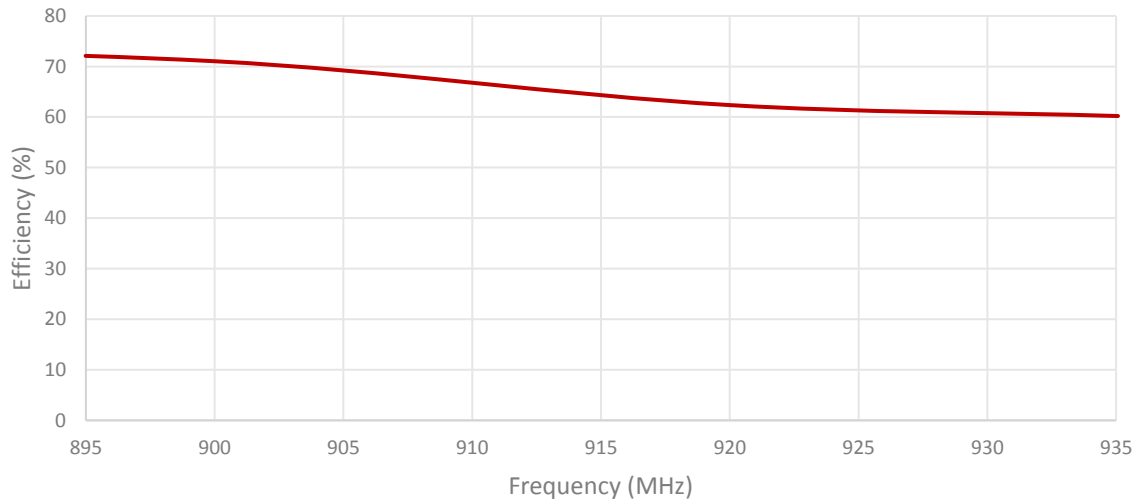
Measured in Certified CTIA 3D Anechoic Chamber

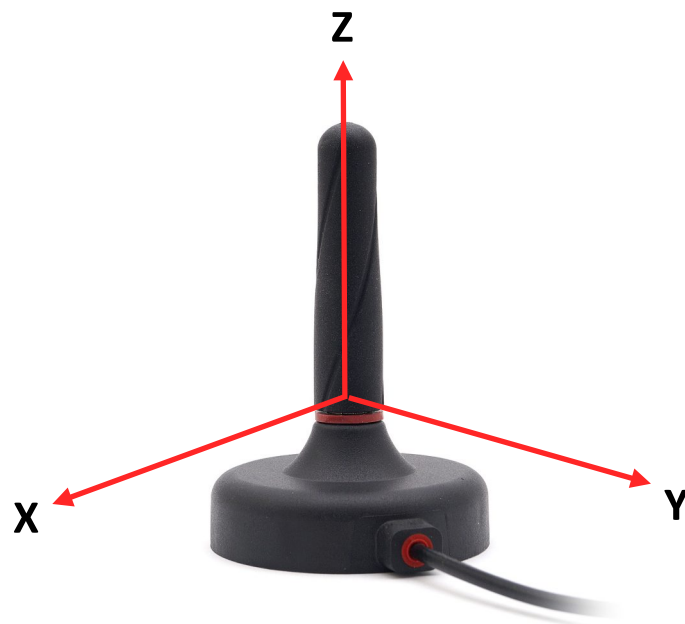
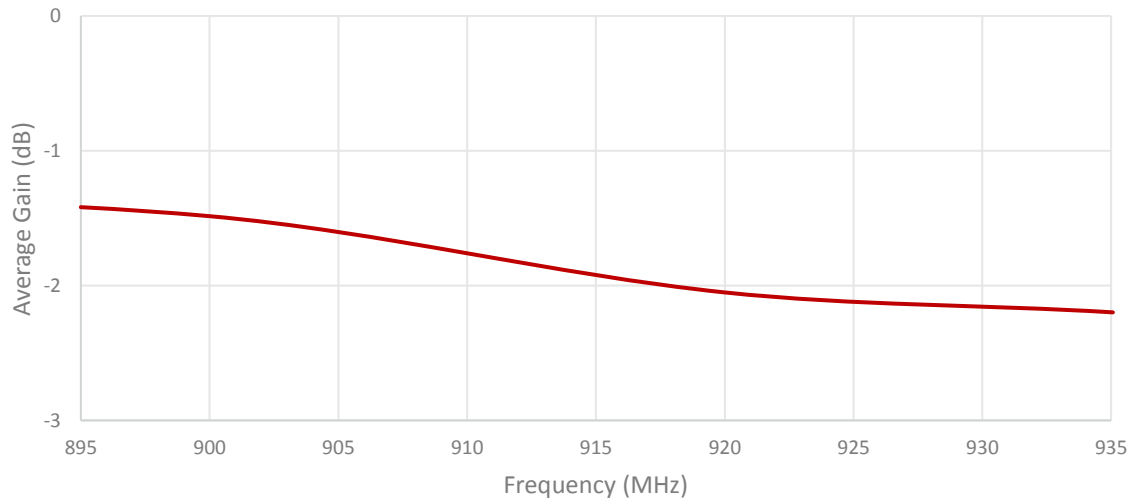
## 2. Mechanical and environmental specifications

| Specifications                   | 2J7515M-915    |
|----------------------------------|----------------|
| <b>Mounting Type</b>             | Magnetic Mount |
| <b>Dimensions (mm)</b>           | Ø 54 × 80      |
| <b>Radome</b>                    | ASA            |
| <b>Radome color</b>              | Black          |
| <b>Antenna Base</b>              | Zamak          |
| <b>Gasket</b>                    | TPE            |
| <b>Operating Temperature (C)</b> | -40 to +85     |
| <b>Storage Temperature (C)</b>   | -40 to +85     |
| <b>Substance Compliance</b>      | RoHS           |
| <b>Certificates</b>              | IP67, IP69     |

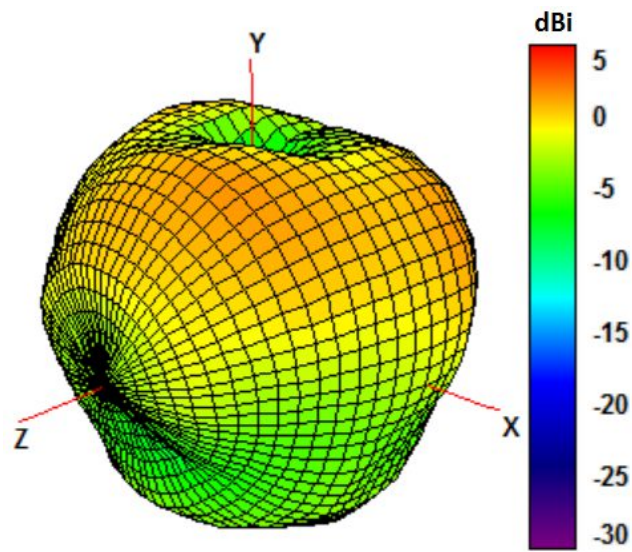
## 3. Antenna parameters





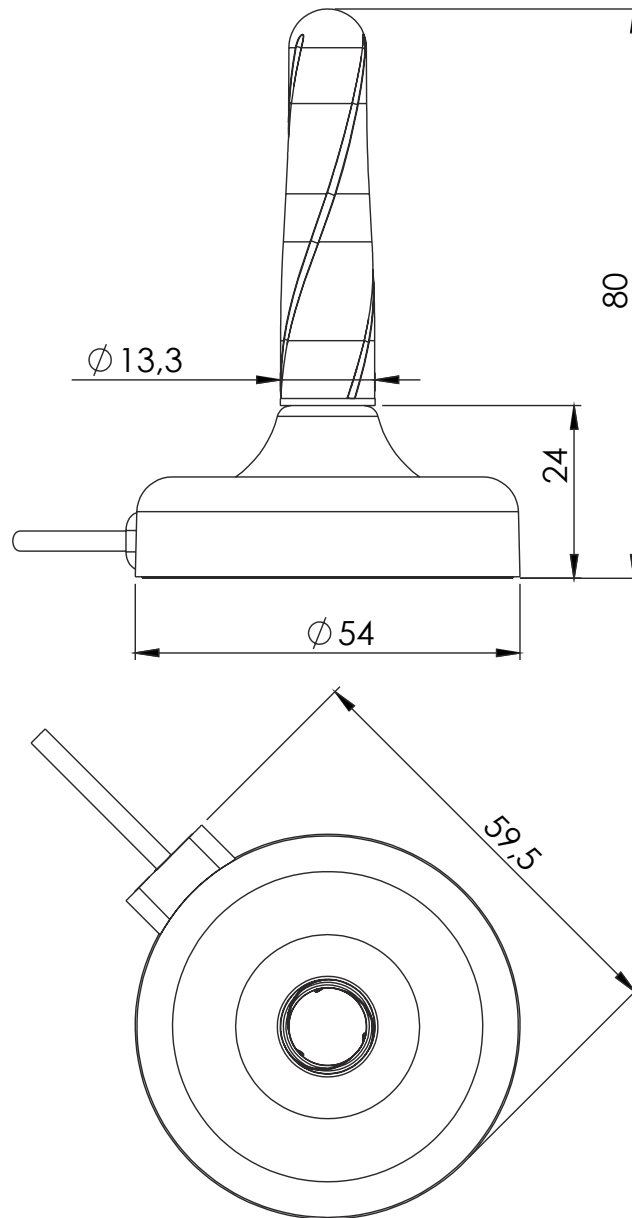


Radiation pattern reference



915 MHz Radiation pattern

## 4. Antenna drawings



## 5. Antenna Images

