

2JDB0205-C477GB

High Frequency Development Board

Key Features

**Development Board
for Connector Mount Antennas**

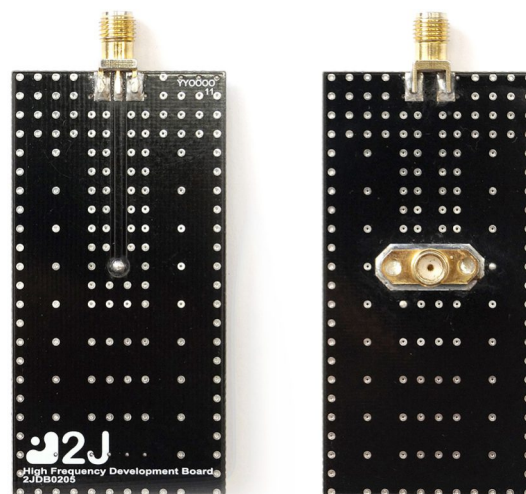
High Frequency Antennas:

2.4, 3.5 and 5.0 GHz

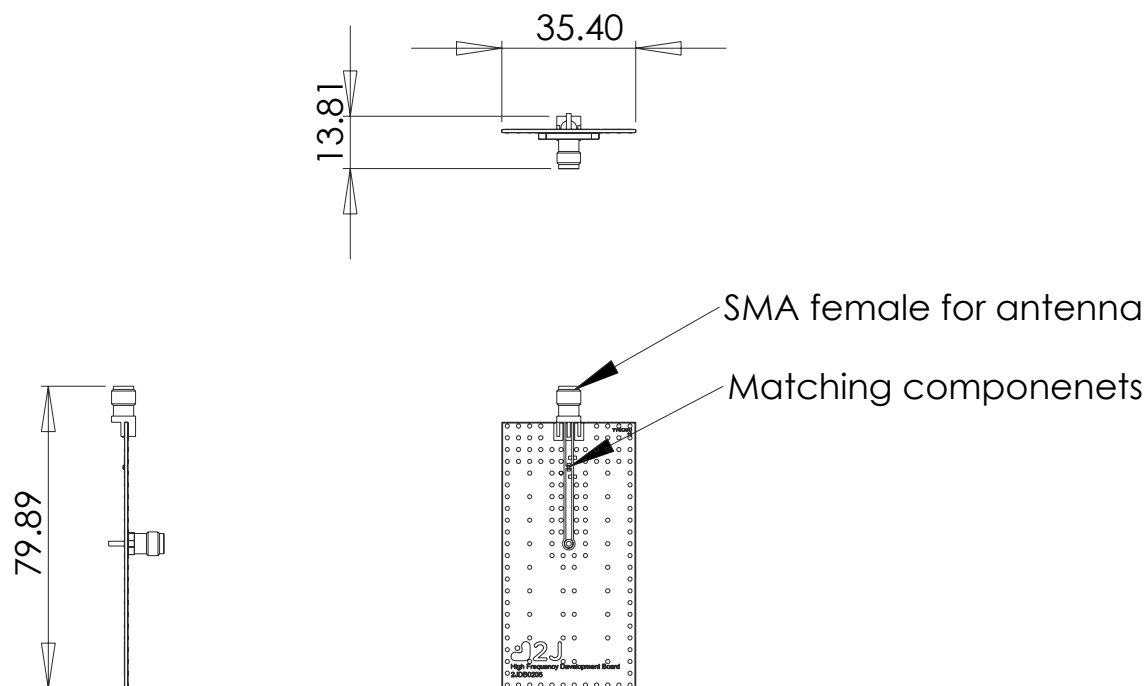
Antenna Mating Connector: RP-SMA-Female

Board Connector: Flange SMA-Female

Ground Plane of 70x35 mm

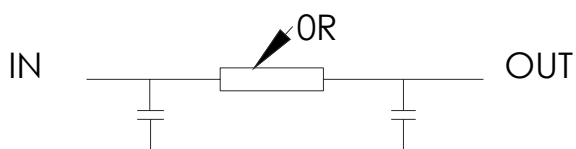


1. Board drawings



This development board is suitable for finding best matching componnets (sic) for high frequency antennas and test high frequency antenna as ground size is similar to most of the existing devices on market.

For matching componenets (sic) can be used up to 3 componenets (sic) in Phi network. But in default is used just OR resistor for connecting input port with output port.



2. Board Images

