

2JDB0204-C831G

GNSS Development Board

Key Features

**Development Board
for Connector Mount Antennas**

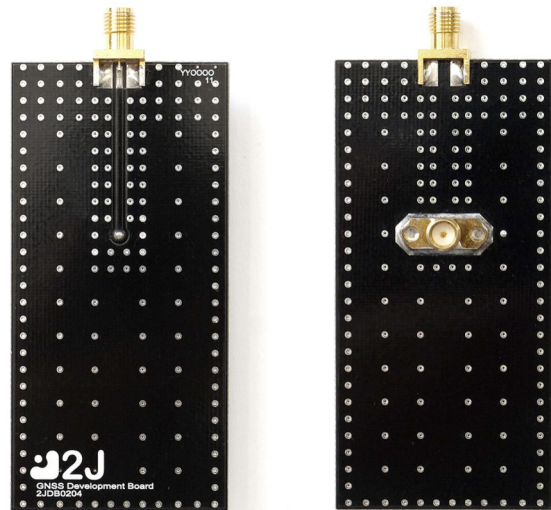
GNSS Antennas:

GPS, GLONASS, BeiDou, Galileo and QZSS

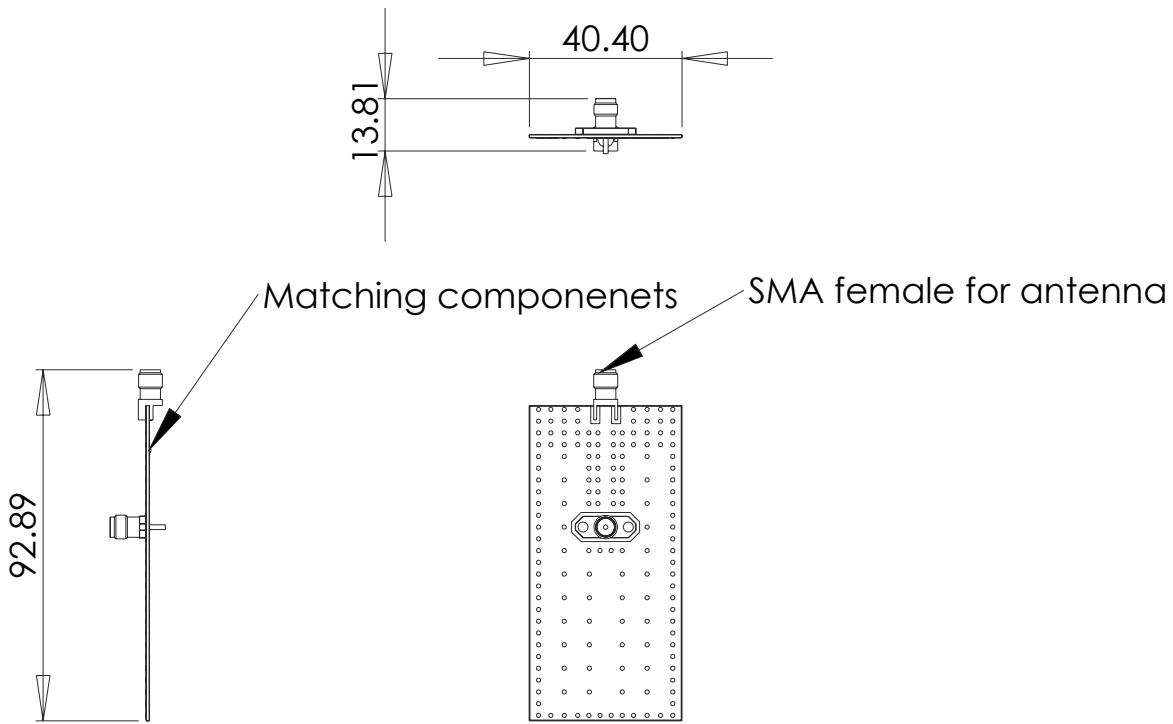
Antenna Mating Connector: Edge SMA- Female

Board Connector: Flange SMA-Female

Ground Plane of 83x40 mm

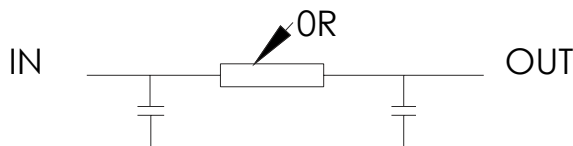


1. Board drawings



This development board is suitable for finding best matching componenets for GNSS antennas and test GNSS antenna as ground size is similar to most of the existing devices on market.

For matching componenets can be used up to 3 componenets in Phi network. But in default is used just 0R resistor for connecting input port with output port.



2. Board Images

