

2JDB0203-C831G

2G/3G Cellular Development Board

Key Features

Development Board for Connector Mount Antennas

2G/3G Cellular Antennas:

2G, CDMA, GPRS, 3G, WCDMA, HSPA, etc.

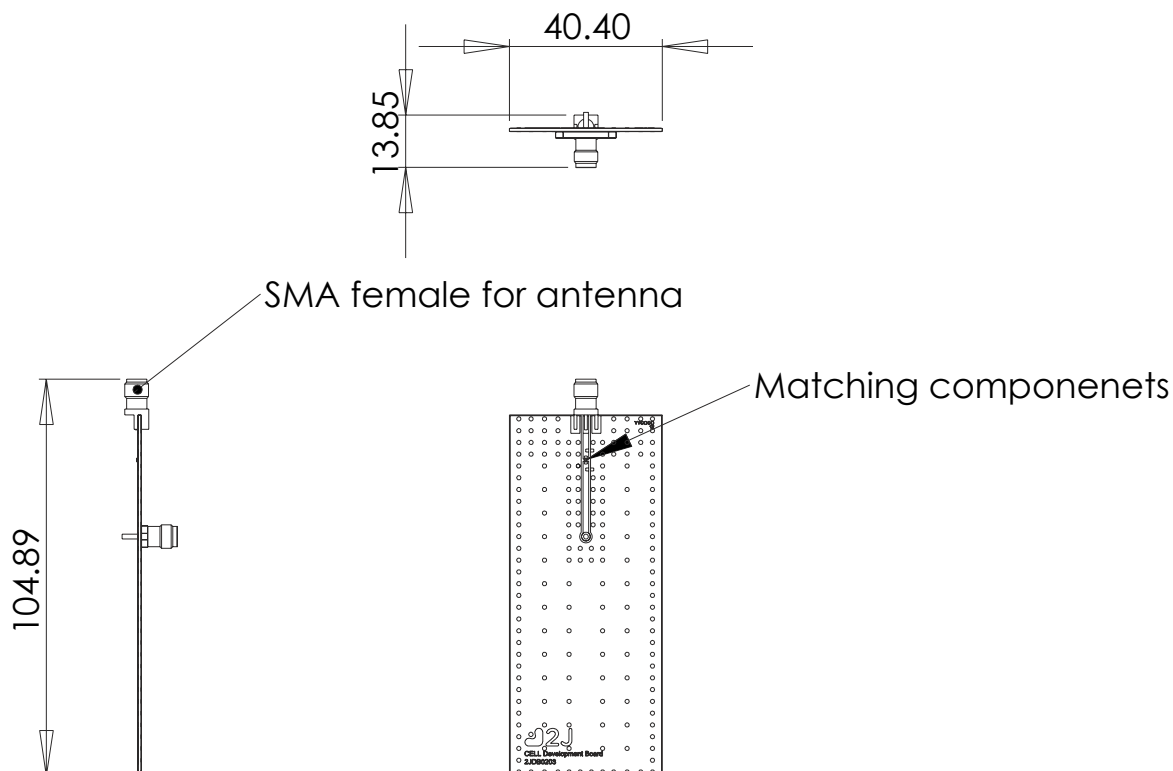
Antenna Mating Connector: Edge SMA-Female

Board Connector: Flange SMA-Female

Ground Plane of 95x40 mm

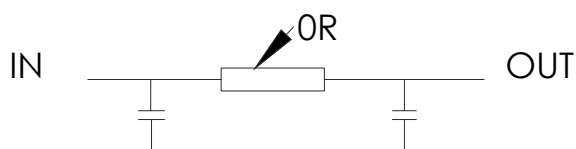


1. Board drawings



This development board is suitable for finding best matching componnets for CELL antennas and test CELL antenna as ground size is similar to most of the existing devices on market.

For matching componenets can be used up to 3 componenets in Phi network. But in default is used just OR resistor for connecting input port with output port.



2. Board Images

