

## 2JDB0201-C831G

### Low Frequency Development Board

#### Key Features

##### Development Board for Connector Mount Antennas

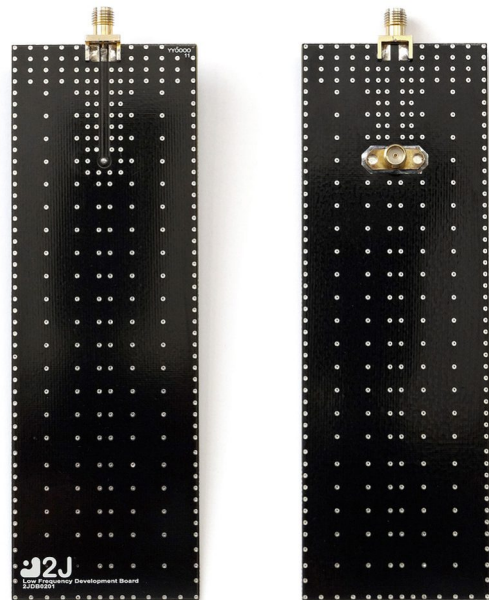
Low Frequency Antennas:

169, 433, 450 MHz, TETRA, ORBCOMM, etc.

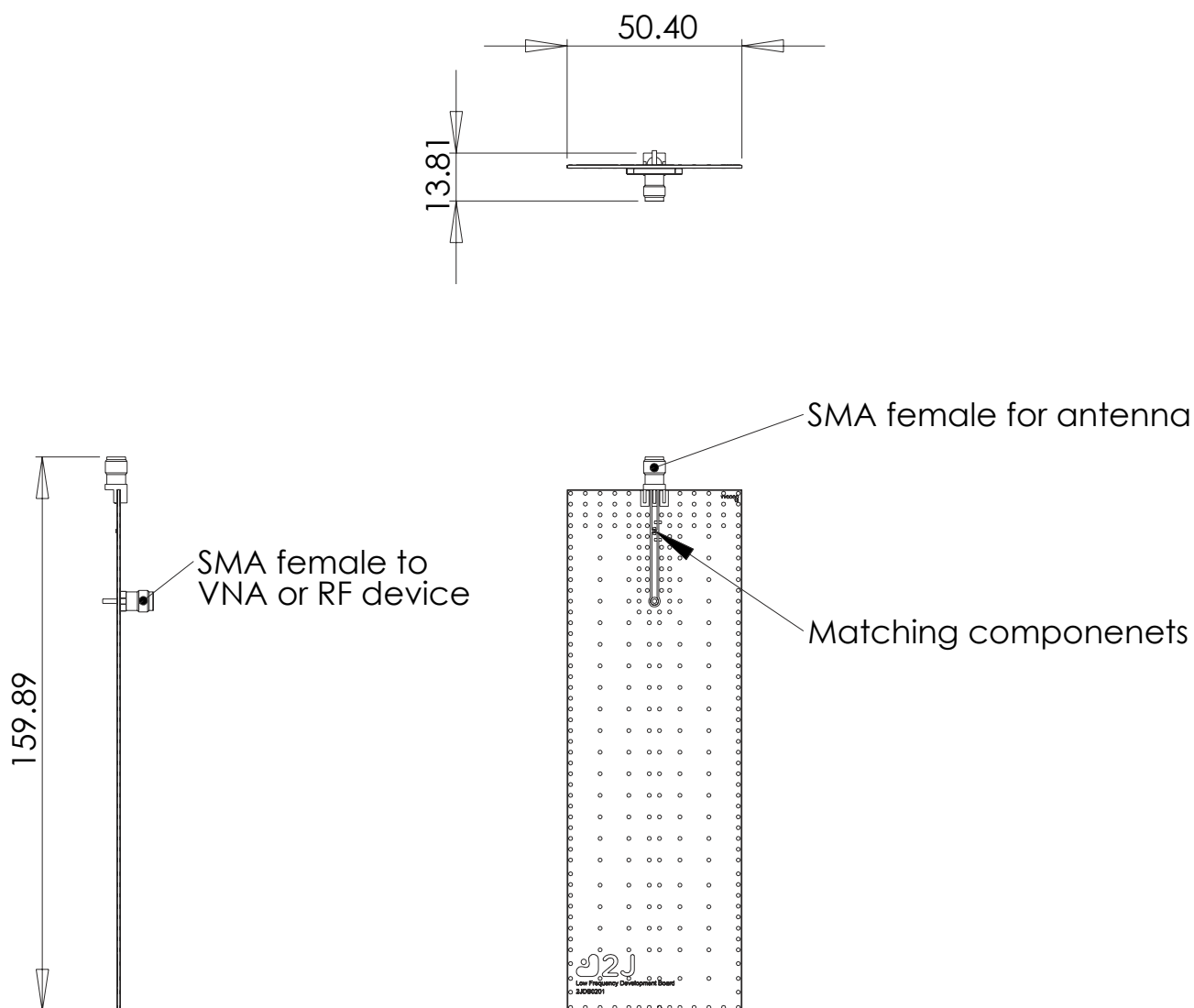
Antenna Mating Connector: Edge SMA-Female

Board Connector: Flange SMA-Female

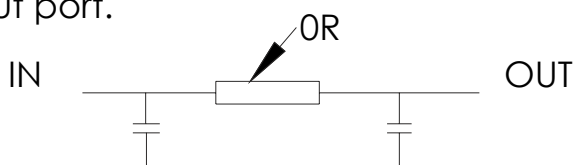
Ground Plane of 150x50 mm



## 1. Board drawings



For matching componenets can be used up to 3 componenets in Phi network. But in default is used just OR resistor for connecting input port with output port.



## 2. Board Images

