

# 2J7590B

## LTE450 Screw Mount

### Key Features

#### LTE450

- 410-496 MHz

Screw Mount

Ground Plane Dependent

Customizable Cable and Connector

Dimensions  $\varnothing$  64 x 81.4 mm

Certificates IP67, IP69



## 1. Antenna and electrical specifications

Parameters	LTE450 Antenna
<b>Standards</b>	LTE Band 450
<b>Band (MHz)</b>	450 MHz
<b>Frequency (MHz)</b>	410-496
<b>Return Loss (dB)</b>	~-6.6
<b>VSWR</b>	~3.5:1
<b>Efficiency (%)</b>	~36.9
<b>Peak Gain (dBi)</b>	~-1.2
<b>Average Gain (dB)</b>	~-4.6
<b>Impedance (Ohm)</b>	50
<b>Polarisation</b>	Linear
<b>Radiation Pattern</b>	Omni-Directional
<b>Max. Input Power (W)</b>	25
<b>Connector Type</b>	SMA-Male Standard (Other Connectors Available)
<b>Cable Length</b>	300 cm Standard (Any Cable Length Available)
<b>Cable Type</b>	LL100 Standard (Other Cables Available)

### Antenna Measurement Conditions:

Mounted on 60 x 60 cm Metal Plate

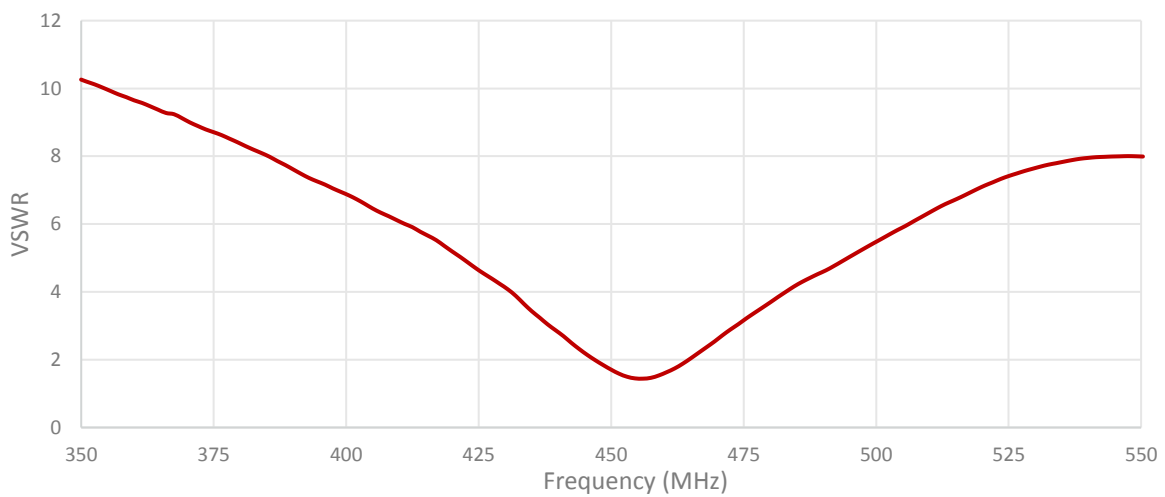
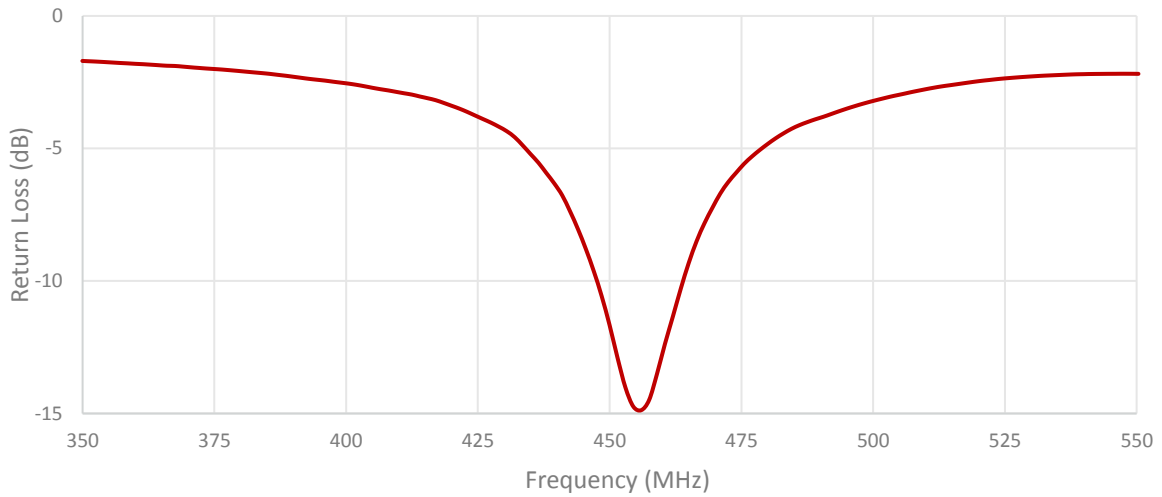
200 cm of LL100

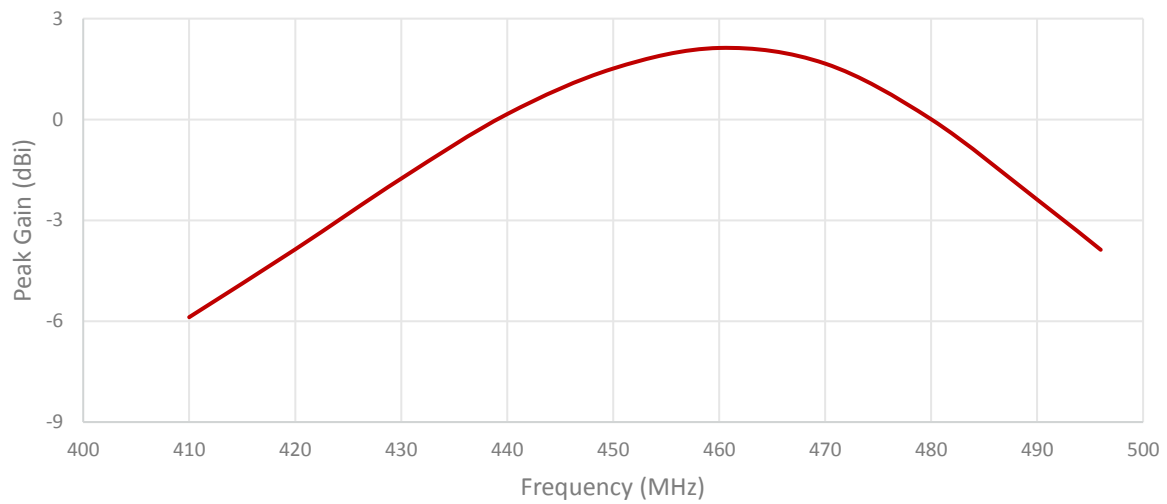
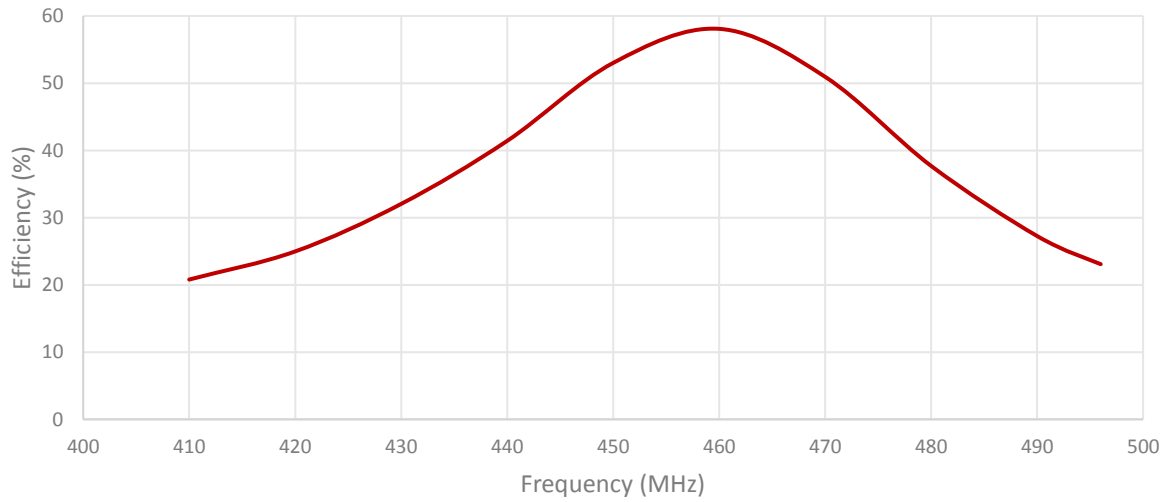
Measured in Certified CTIA 3D Anechoic Chamber

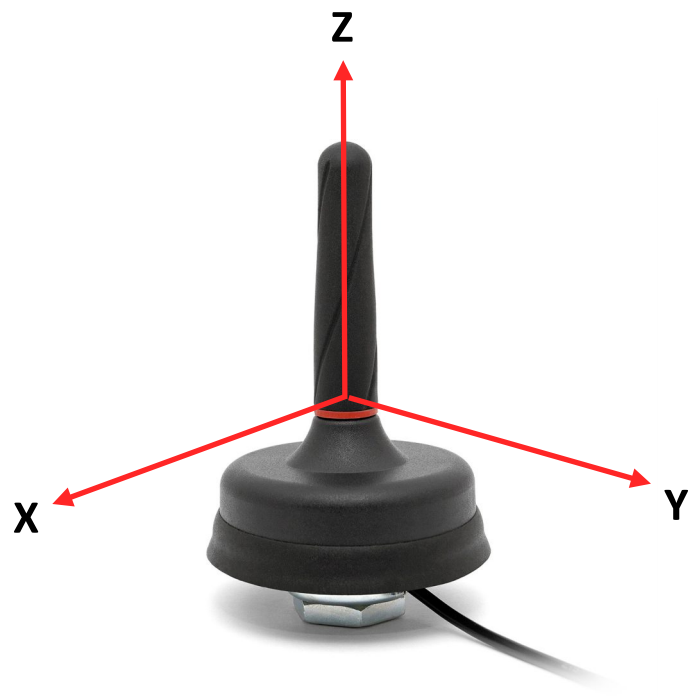
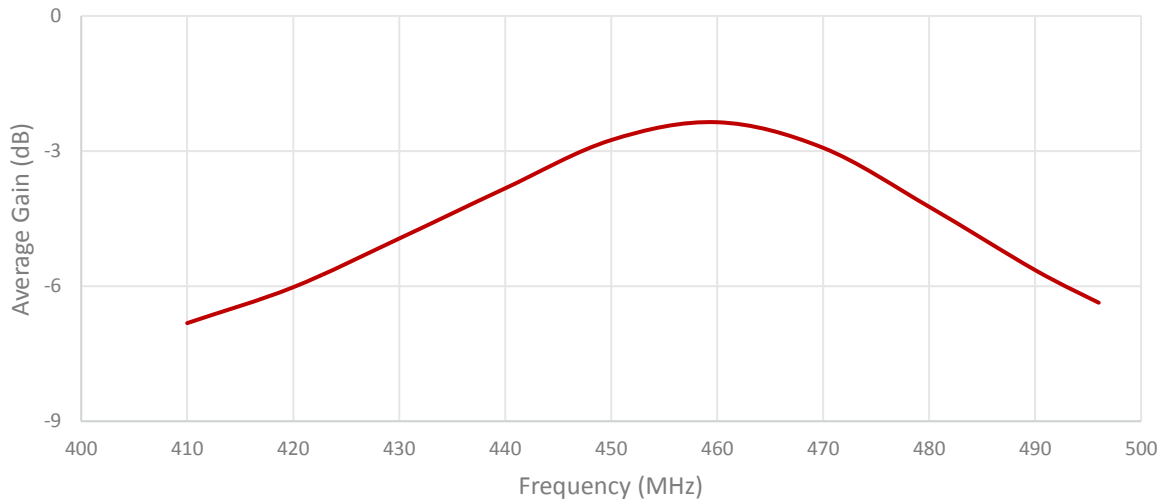
## 2. Mechanical and environmental specifications

Specifications	2J7590B
<b>Mounting Type</b>	Screw Mount
<b>Dimensions (mm)</b>	Ø 64 × 81.4
<b>Rec. Tighten Torque (Nm)</b>	6 Nm
<b>Radome</b>	ASA
<b>Radome color</b>	Black
<b>Antenna Base</b>	Zamak
<b>Gasket</b>	TPE
<b>Operating Temperature (C)</b>	-40 to +85
<b>Storage Temperature (C)</b>	-40 to +85
<b>Substance Compliance</b>	RoHS
<b>Certificates</b>	IP67, IP69

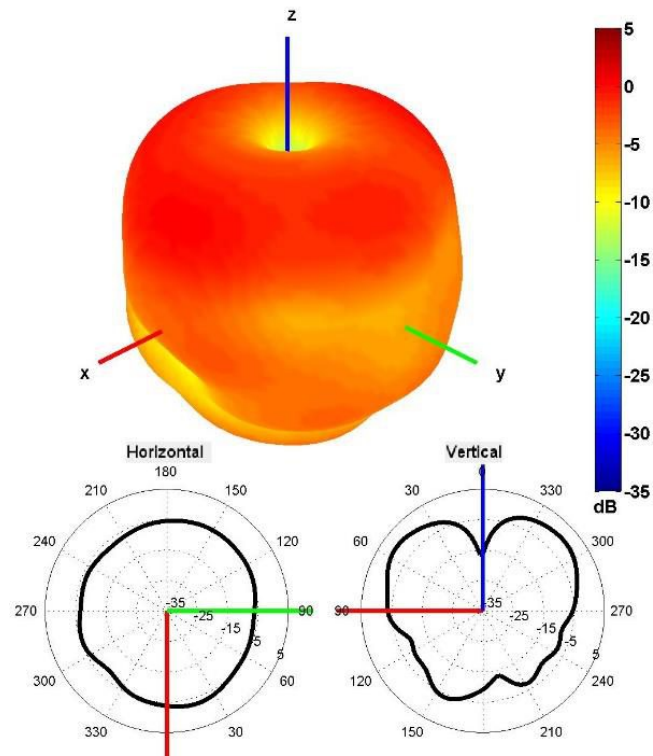
## 3. Antenna parameters





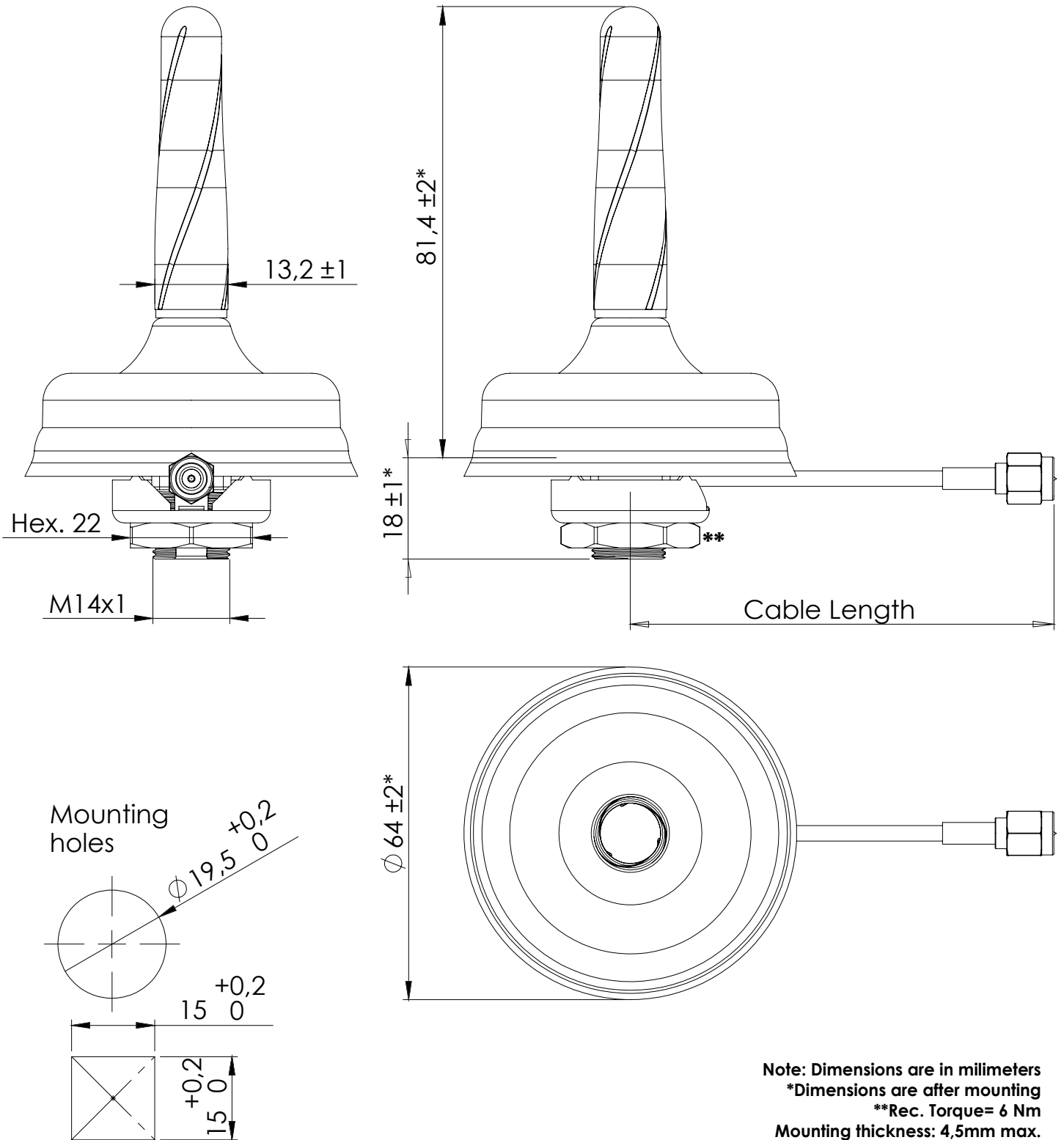


Radiation pattern reference



450 MHz Radiation pattern

## 4. Antenna drawings



## 5. Antenna Images

