

# 2J7584MG

## 5GNR and GPS/GLONASS Magnetic Mount

### Key Features

#### Cable 1: 5GNR

- 617-960 MHz
- 1427-2690 MHz
- 3300-5000 MHz
- 5150-5925 MHz

#### Cable 2: GPS/GLONASS

- 1575-1610 MHz

Magnetic Mount

High Performance

Ground Plane Dependent

Customizable Cable and Connector

Dimensions  $\varnothing$  54 x 80 mm

Certificates IP67, IP69



## 1. Antenna and electrical specifications

Cable 1

Parameters	5GNR Antenna			
<b>Technologies</b>	5G, 4G, 3G and 2G			
<b>Standards</b>	5GNR/4GLTE/FirstNet/CBRS/LPWA/CAT-X/CAT-Mx/CAT-NBx/NB-IoT/3G/2G			
<b>Frequency (MHz)</b>	617-960	1427-2690	3300-5000	5150-5925
<b>Band (MHz)</b>	600, 700, 850, 900	1500, 1600, 1700, 1800, 1900, 2000, 2100, 2300, 2500, 2600	3300, 3500, 3600, 3700, 4500	5200, 5500, 5800
<b>5GNR Bands</b>	n5, n8, 12, n20, n28, n71, n81, n82, n83,	n1, n2, n3, n7, n25, n34, n38, n39, n40, n41, n50, n51, n66, n70, n74, n75, n76, n80, n84, n86	n77, n78, n79	
<b>4GLTE Bands</b>	B5, B6, B8, B12, B13, B14, B17, B18, B19, B20, B26, B27, B28, B29, B44, B67, B68, B71, B85	B1, B2, B3, B4, B7, B9, B10, B11, B21, B23, B24, B25, B30, B32, B33, B34, B35, B36, B37, B38, B39, B40, B41, B45, B50, B51, B65, B66, B69, B70, B74, B75, B76	B22, B42, B43, B48, B49, B52	B46, B47, B252, B255
<b>3GCELL Bands</b>	B5, B6, B8, B12, B13, B14, B19, B20, B26	B1, B2, B3, B4, B7, B9, B10, B11, B21, B25, B32, B33, B34, B35, B36, B37, B38, B39, B40	B22	
<b>2GCELL Bands</b>	710, 750, 810T, 850, 900P, 900E, 900R	1800DCS, 1900PCS		
<b>CDMACELL Bands</b>	BC0, BC2, BC3, BC7, BC9, BC10, BC12, BC18, BC19	BC1, BC4, BC6, BC8, BC13, BC14, BC15, BC16, BC20, BC21		
<b>Return Loss (dB)</b>	~-8.9	~-15.1	~-11.7	~-5.1
<b>VSWR</b>	~3.1:1	~1.9:1	~1.9:1	~3.6:1
<b>Efficiency (%)</b>	~50.7	~60.1	~31.7	~21.1
<b>Peak Gain (dBi)</b>	~0.3	~3.4	~1.5	~0.1
<b>Average Gain (dB)</b>	~-3.4	~-2.4	~-5.1	~-6.8
<b>Impedance (Ohm)</b>	50			
<b>Polarisation</b>	Linear			
<b>Radiation Pattern</b>	Omni-Directional			
<b>Max. Input Power (W)</b>	35			
<b>Connector Type</b>	SMA-Male Standard (Other Connectors Available)			
<b>Cable Length</b>	300 cm Standard (Any Cable Length Available)			
<b>Cable Type</b>	LL100			

### Antenna Measurement Conditions:

Mounted on 30 x 30 Metal Plate

100 cm of Cable LL100

Measured in Certified CTIA 3D Anechoic Chamber

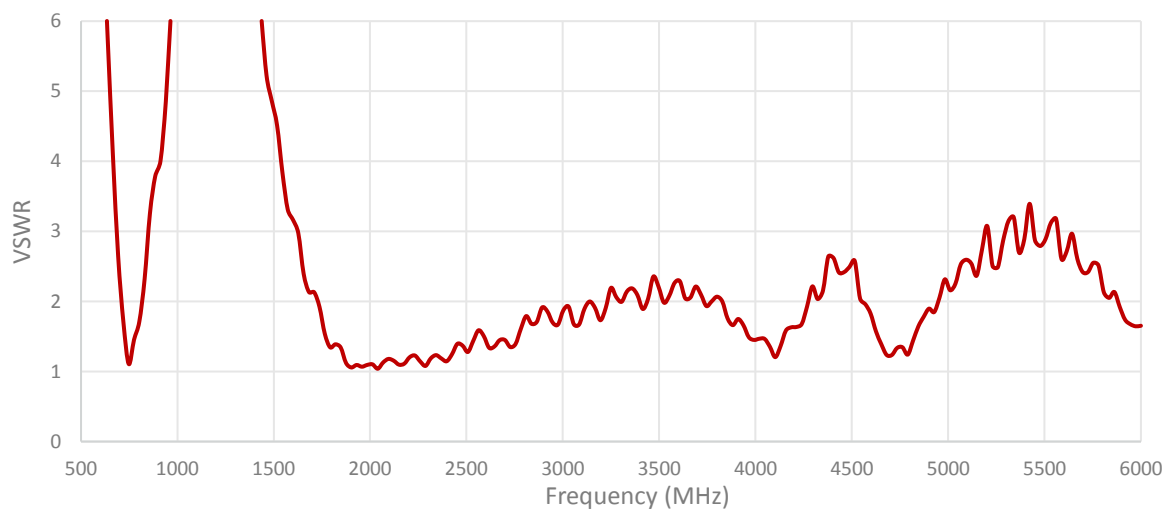
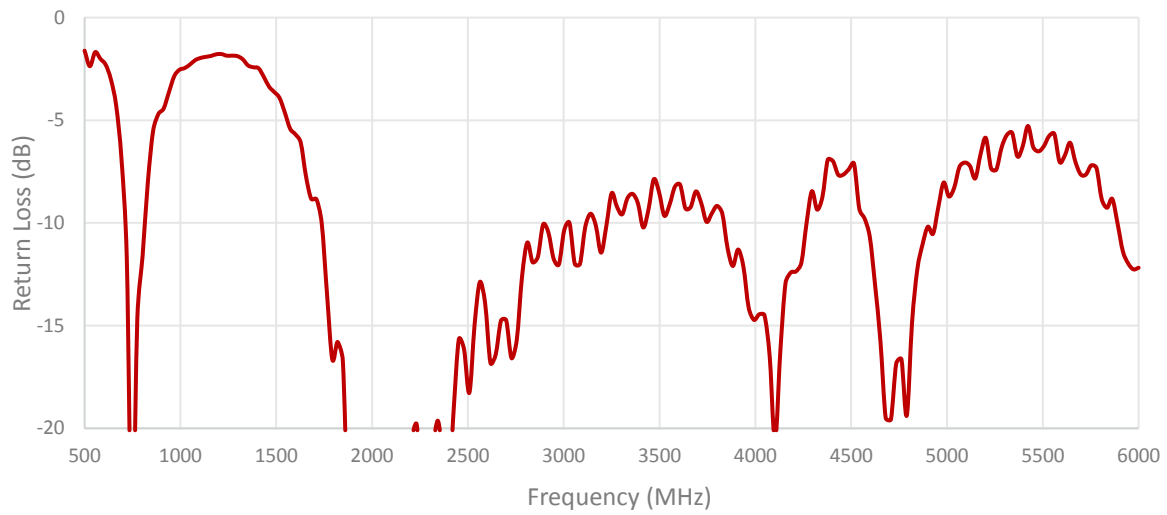
Cable 2

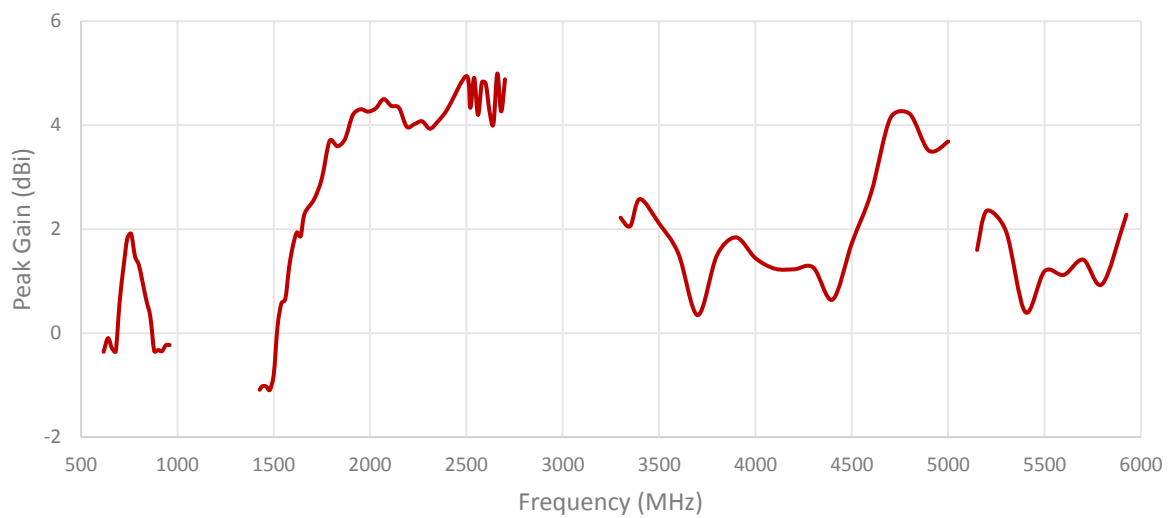
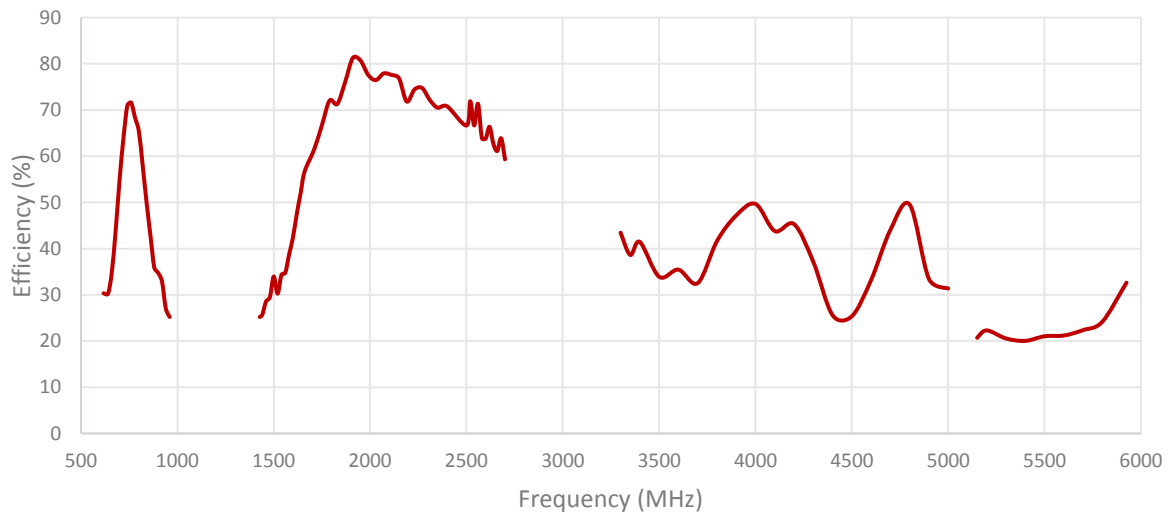
Parameters	GPS/GLONASS Antenna	
<b>Standard</b>	GPS / GLONASS	
<b>Band (MHz)</b>	1575	1602
<b>Frequency(MHz)</b>	1575.42	1598-1610
<b>Return Loss (dB)</b>	<-20	
<b>VSWR</b>	<1.2:1	
<b>Impedance</b>	50	
<b>Radiation Pattern</b>	Hemispherical	
<b>Polarization</b>	RHCP	
<b>Saw Filter</b>	No Filter	
<b>Active Gain (dB)</b>	26 @ 3V / 27dB @ 5V	
<b>Noise Figure (dB)</b>	1.5	
<b>Voltage (V)</b>	2.7 – 5.5	
<b>Current (mA)</b>	15 - 25	
<b>Power Consumption (mW)</b>	40 - 137	
<b>Connector Type</b>	Most RF Connectors (SMA-Male Standard)	
<b>Cable Length</b>	Any Cable Length (200cm Standard)	
<b>Cable Type</b>	RG174	

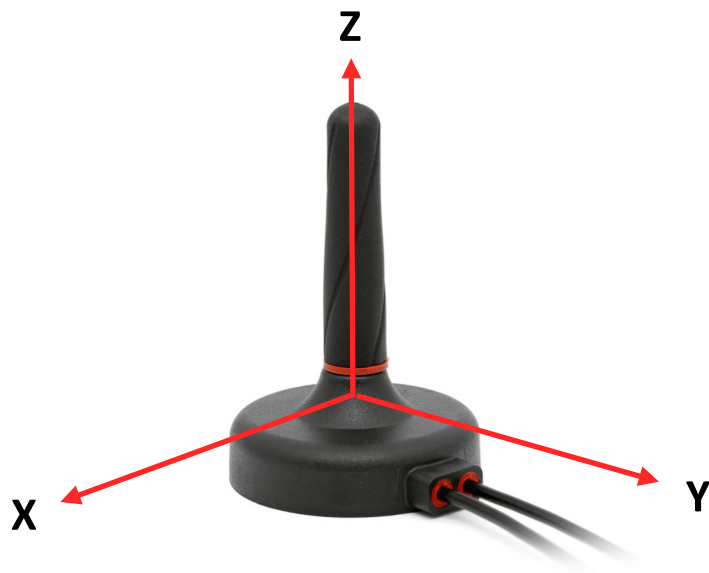
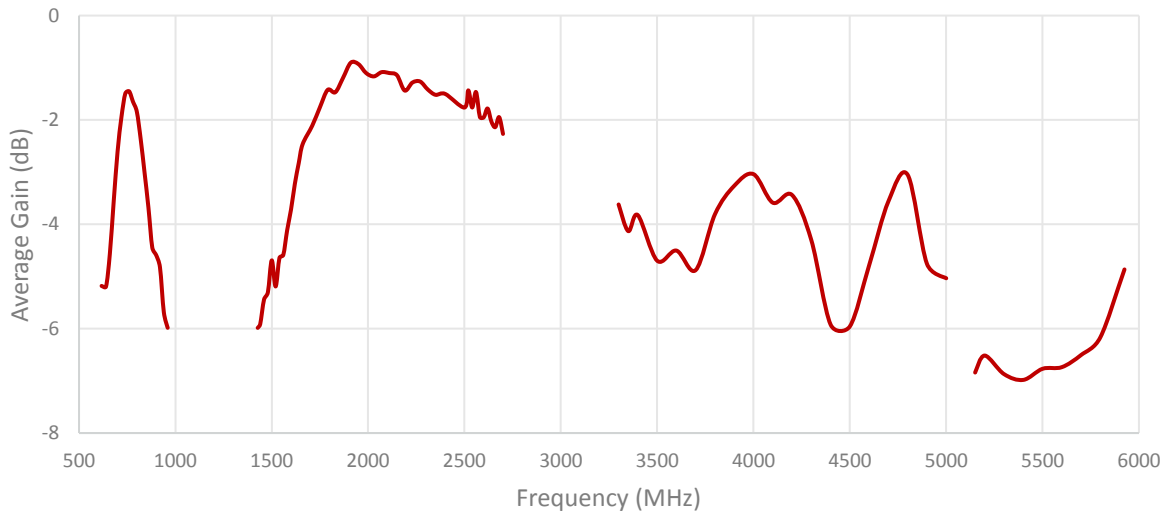
## 2. Mechanical and environmental specifications

Specifications	2J7584MG
<b>Mounting Type</b>	Magnetic Mount
<b>Dimensions (mm)</b>	Ø 54 × 80
<b>Radome</b>	ASA
<b>Radome color</b>	Black
<b>Antenna Base</b>	Zamak
<b>Gasket</b>	TPE
<b>Operating Temperature (C)</b>	-40 to +85
<b>Storage Temperature (C)</b>	-40 to +85
<b>Substance Compliance</b>	RoHS
<b>Certificates</b>	IP67, IP69

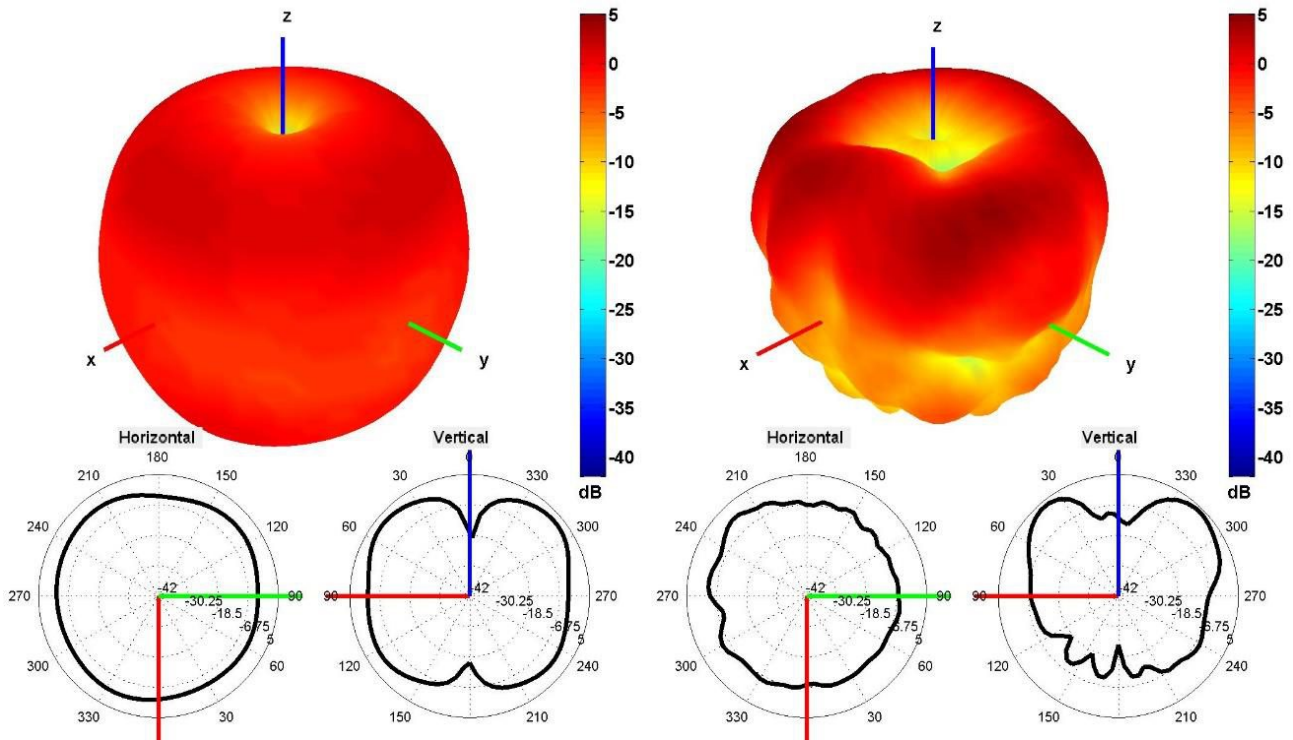
## 3. Antenna parameters



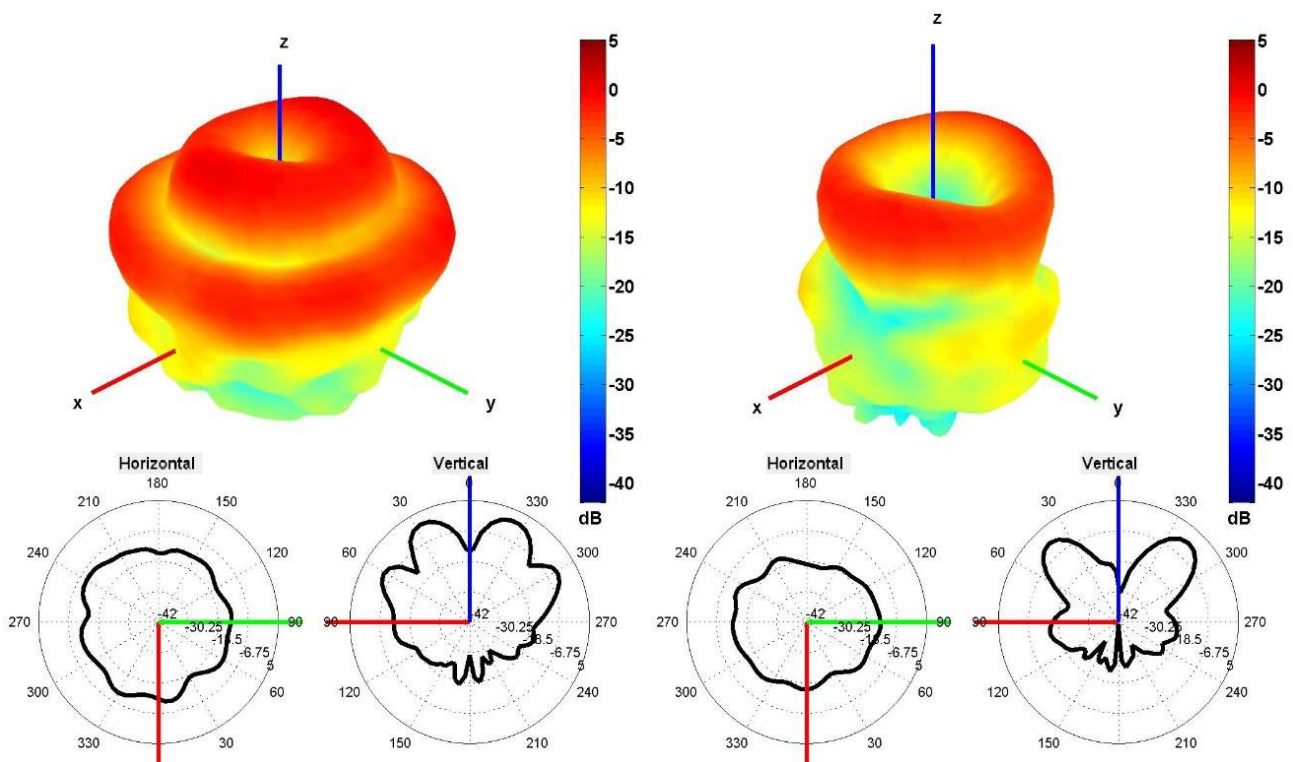




Radiation pattern reference

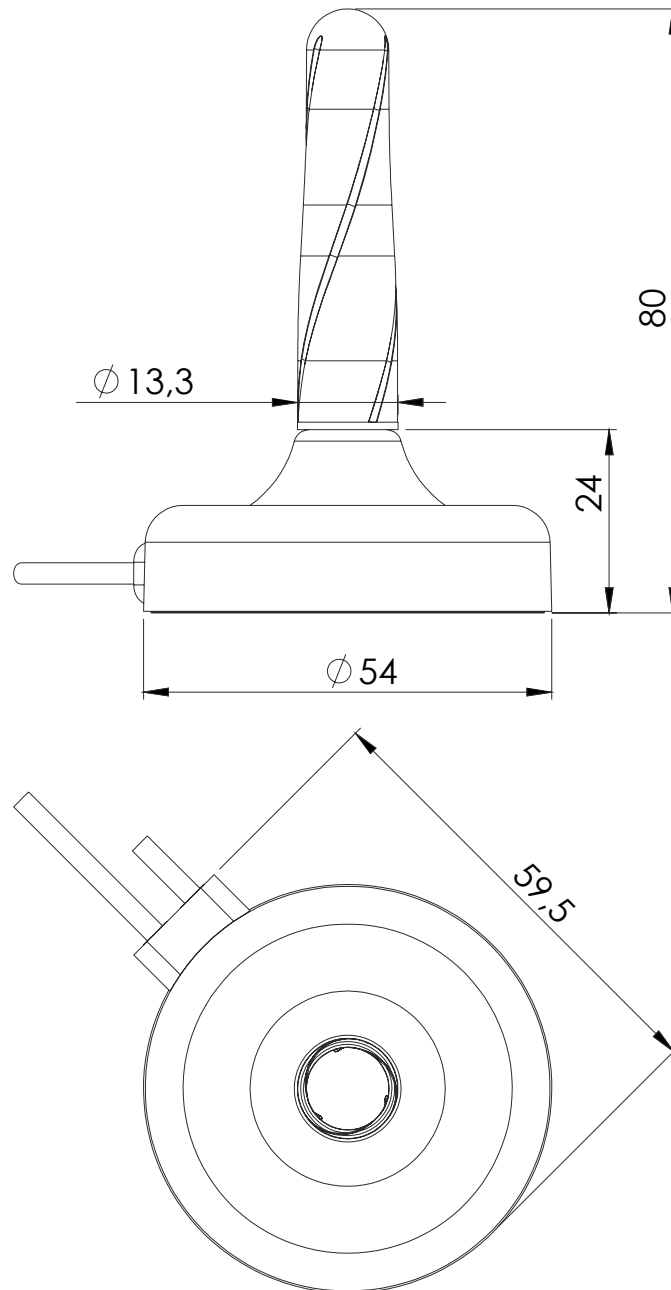


740 and 2500 MHz Radiation pattern



4500 and 5500 MHz Radiation pattern

## 4. Antenna drawings





## 5. Antenna Images

