

# 2J2402H

2.4/5.0/6.0 GHz ISM Wall Mount

## Key Features

### Cable 1: 2.4/5.0/6.0 GHz ISM

- 2410-2490 MHz
- 4920-5925 Mhz
- 5925-7125 MHz

Wall Mount

High Performance

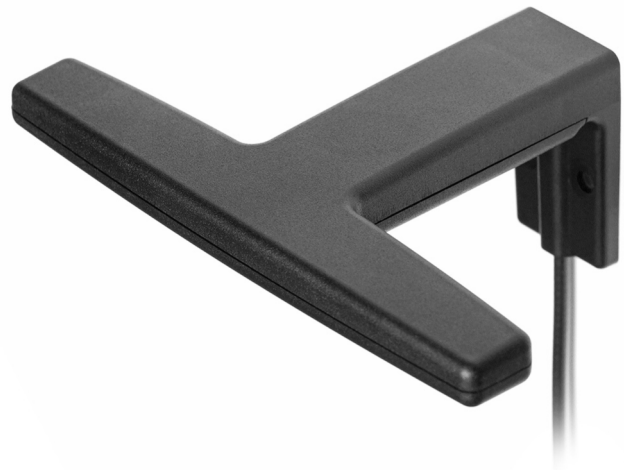
Compact Size

Ground Plane Independent

Customizable Cable and Connector

Dimensions 123 × 81 × 45 mm

Certificates: IP67, IP69



## 1. Antenna and electrical specifications

Cable 1

Parameters	2.4/5.0/6.0 GHz ISM Antenna		
<b>Standards</b>	WiFi, BT, ZigBee, ISM		
<b>Band (MHz)</b>	2.4 GHz	5.0 GHz	6.0 GHz
<b>Frequency (MHz)</b>	2410-2490	4920-5925	5925-7125
<b>Return Loss (dB)</b>	~-10.7	~-12.0	~-22.4
<b>VSWR</b>	~2.0:1	~1.9:1	~1.1:1
<b>Efficiency (%)</b>	~55.1	~30.7	~45.0
<b>Peak Gain (dBi)</b>	~1.5	~0.5	~2.1
<b>Average Gain (dB)</b>	~-2.6	~-5.5	~-3.4
<b>Impedance (Ohm)</b>	50		
<b>Polarisation</b>	Linear		
<b>Radiation Pattern</b>	Omni-Directional		
<b>Max. Input Power (W)</b>	10		
<b>Connector Type</b>	SMA-Male RP Standard (Other Connectors Available)		
<b>Cable Length</b>	300 cm Standard (Any Cable Length Available)		
<b>Cable Type</b>	LL100 Standard (Other Cables Available)		

### Antenna Measurement Conditions:

Free Space

100 cm LL100

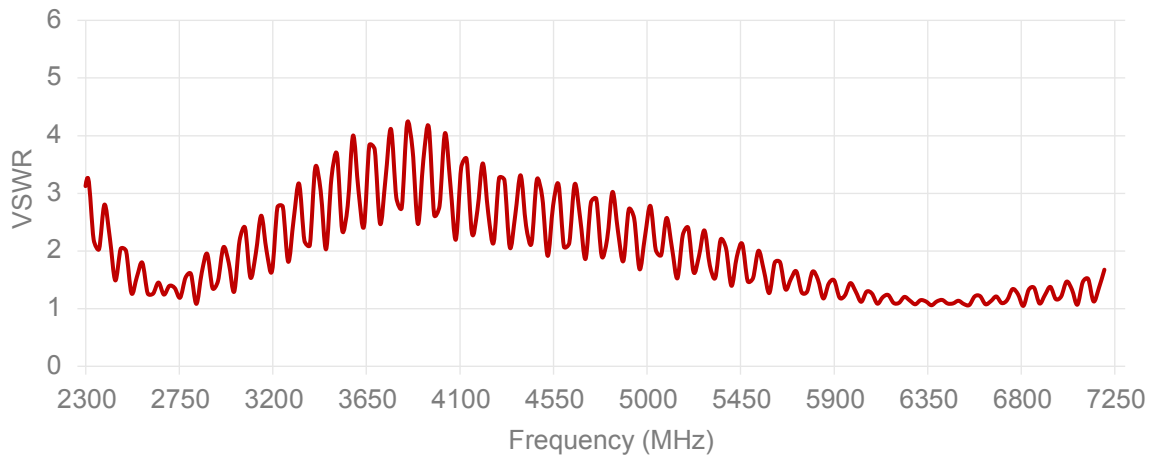
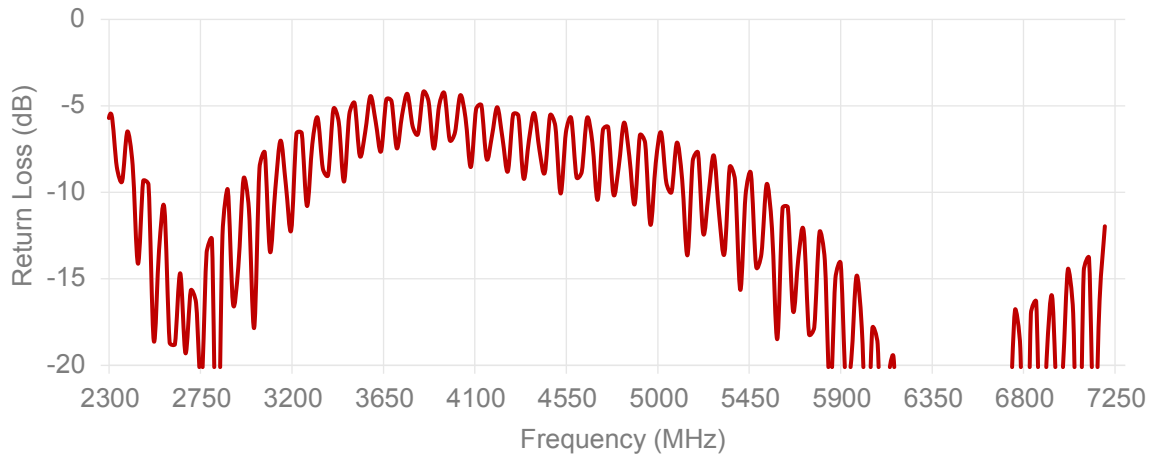
Measured in Certified CTIA 3D Anechoic Chamber

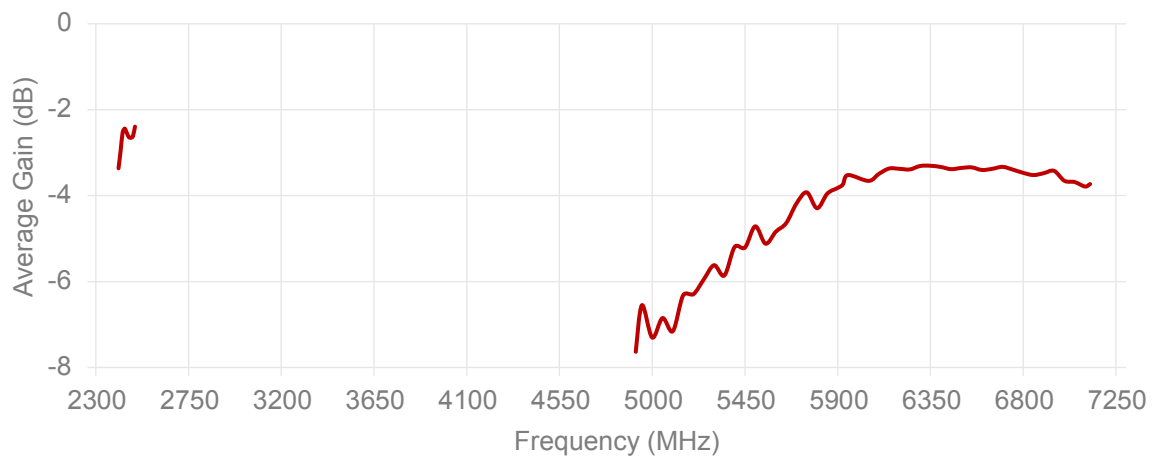
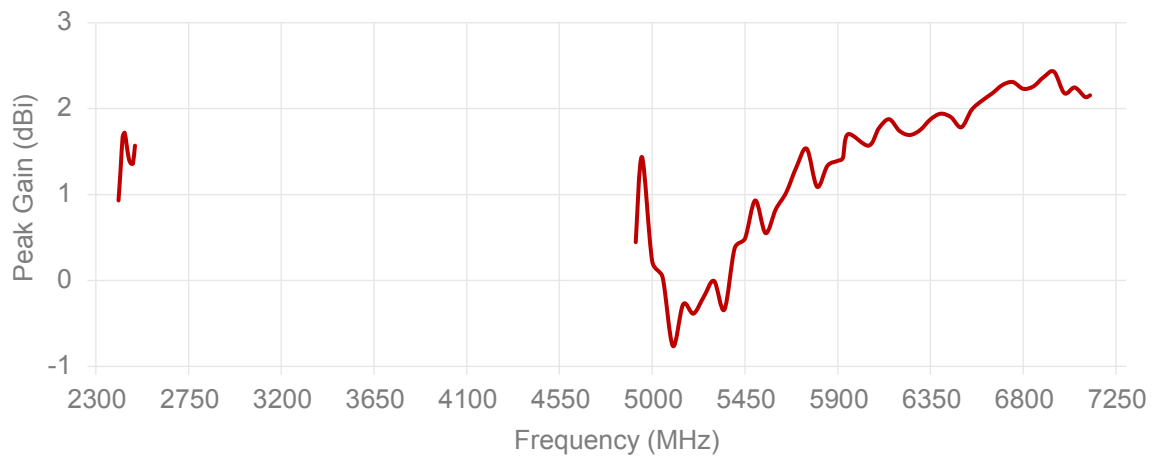
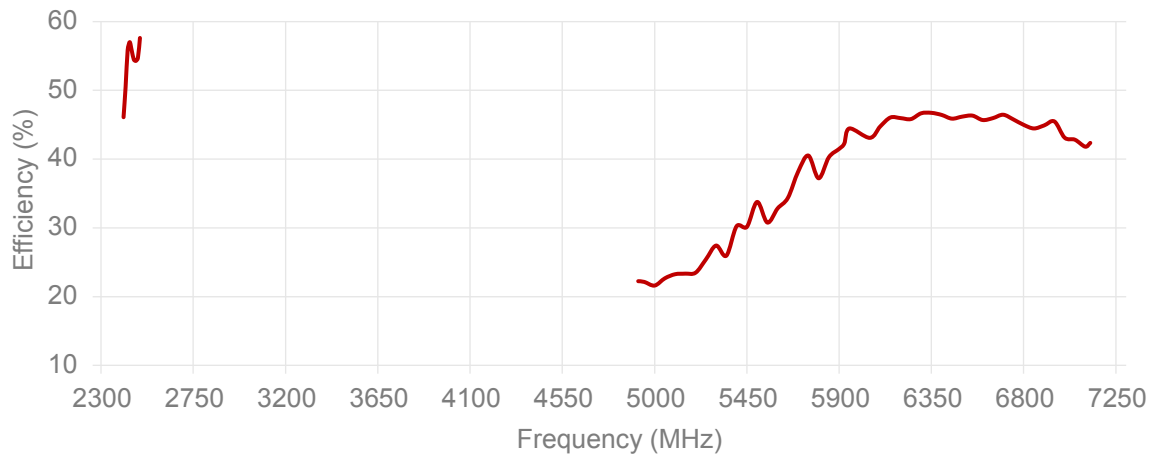
## 2. Mechanical and environmental specifications

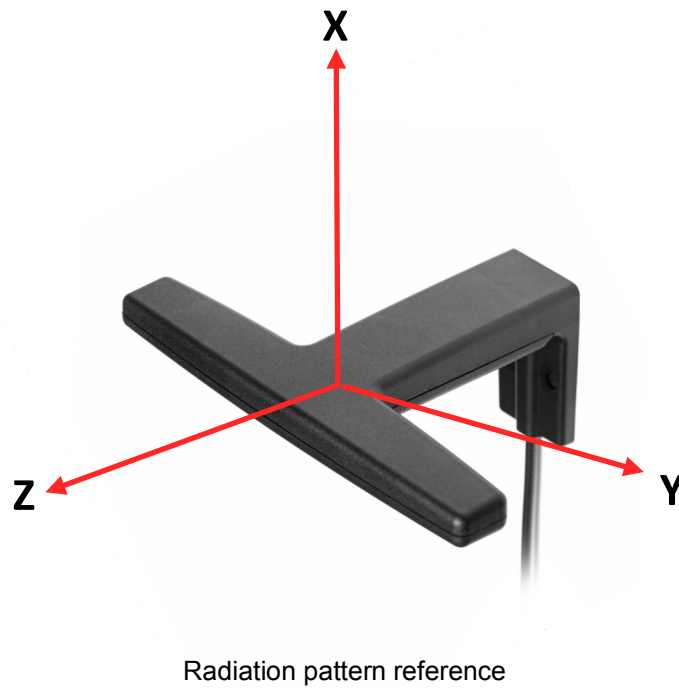
Specifications	2J2402H
<b>Mounting Type</b>	Wall Mount
<b>Dimensions (mm)</b>	123 × 81 × 45
<b>Fixings</b>	2× M4 (Not included)
<b>Radome Type</b>	ASA
<b>Radome Color</b>	Black, White
<b>Operating Temperature (C)</b>	-40 to +85
<b>Storage Temperature (C)</b>	-40 to +85
<b>Substance Compliance</b>	RoHS
<b>Certificates</b>	IP67, IP69

## 3. Antenna parameters

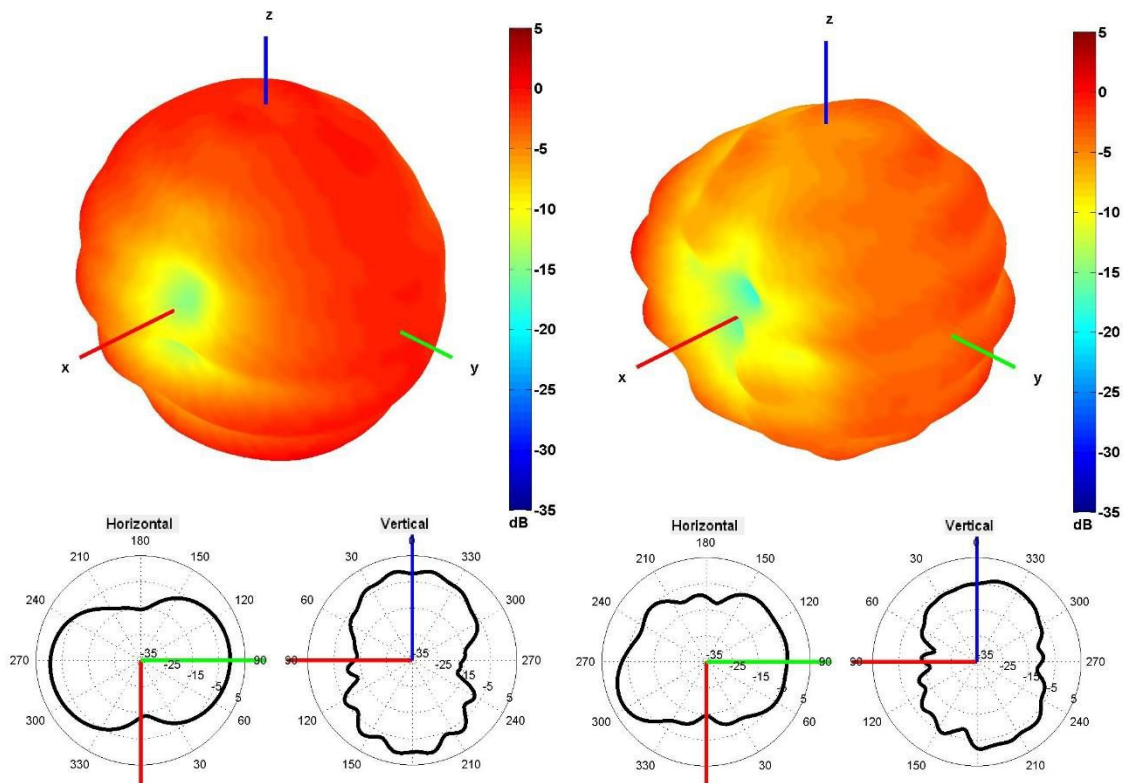
Cable 1: 2.4/5.0/6.0 GHz ISM



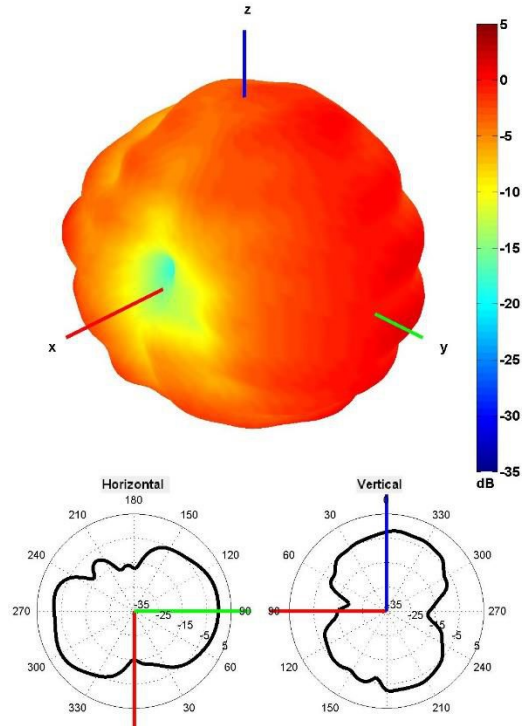




Cable 1: 2.4/5.0/6.0 GHz ISM

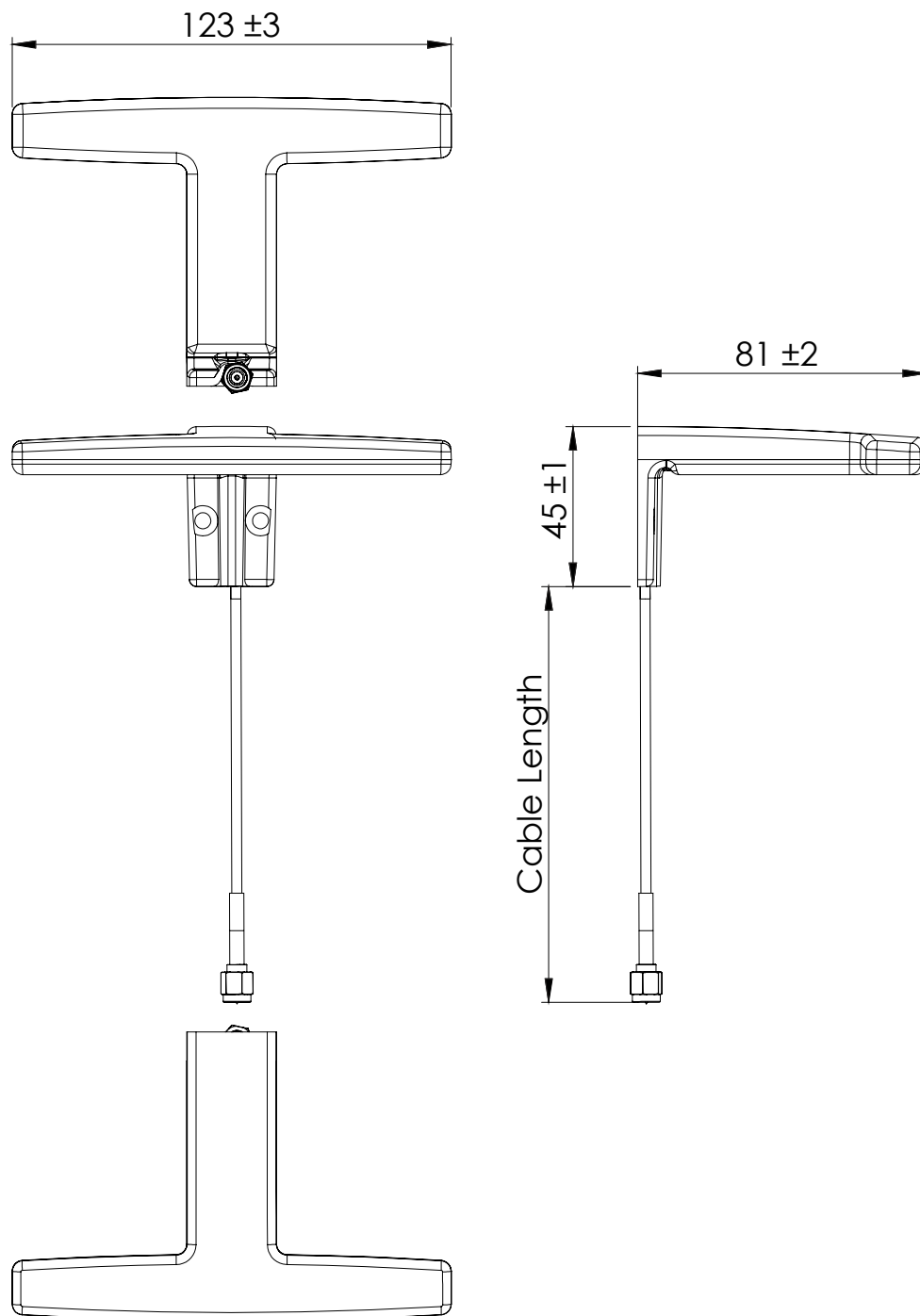


2450 and 5500 MHz Radiation pattern



6500 MHz Radiation pattern

## 4. Antenna drawings



Note: Dimensions are in millimeters

## 5. Antenna Images

